

50003

1.

2

3.

412

443

4.

1.

2

3.

4.

5.

2

2

2

TEFL

3

5

1.

2

1.

;

2

3.

1. 新办《外国专家来华工作许可证》申请材料清单

3. 延期《外国专家证》申请材料清单

4. 变更《外国专家证》申请材料清单

5			1			
6			1			
7						

5. 注销《外国专家证》申请材料清单

		#		#		
%			%			
&			%			
..			%			
(%			
)						

6. 注销《外国专家来华工作许可证》申请材料清单

		#		#		
%			%			
&			%			
..			%			
(%			
)						

7. 遗补《外国专家证》申请材料清单

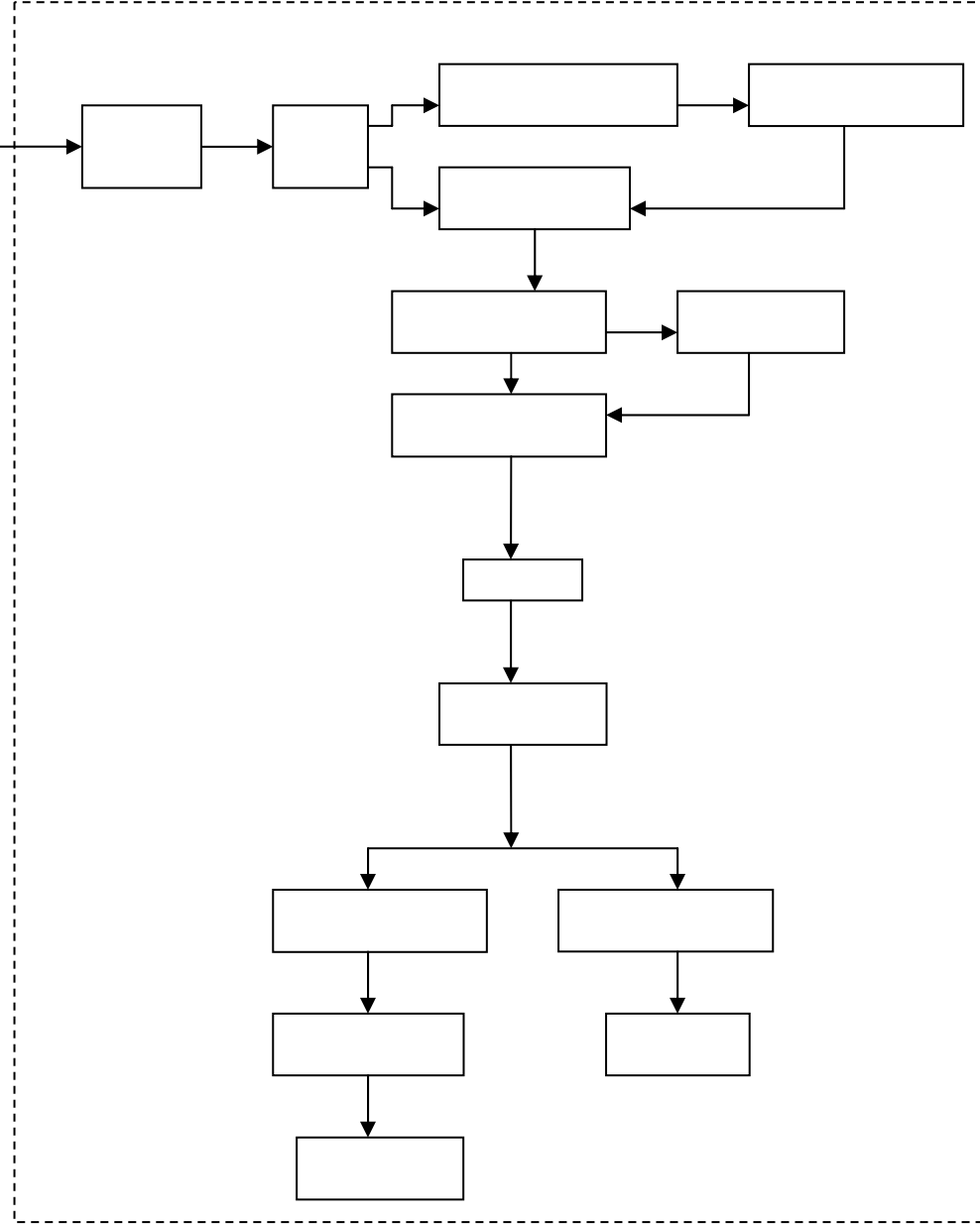
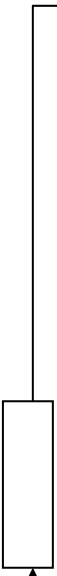
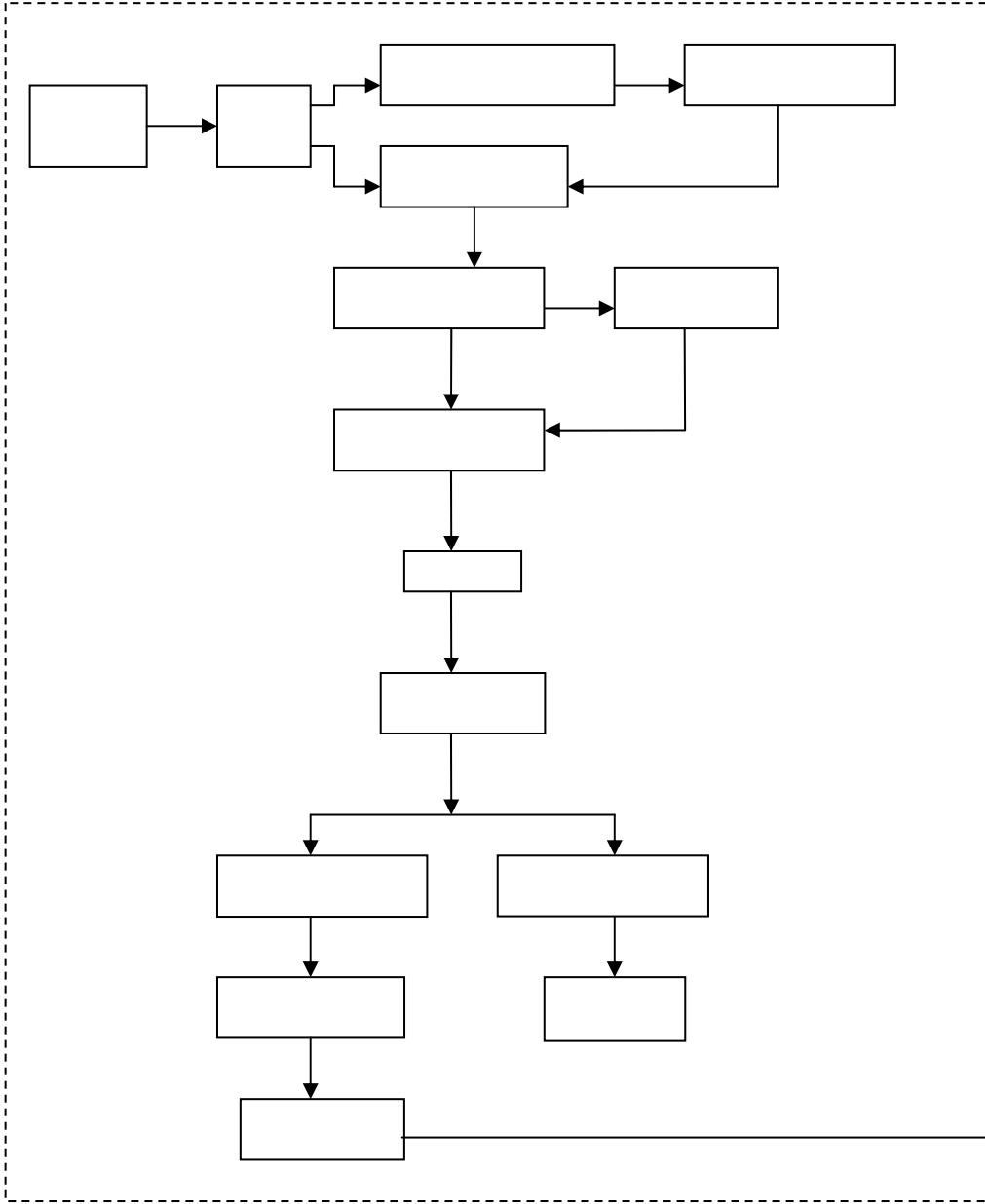
		#		#		
%			%			

&			%			
'			%			
(*		&		(\$aay ' \$aa	
)						

<https://fewpa.safesa.gov/login.php>

58

4 " " D
 400 300 8 300 " "
 9:00 11:30 13:30
 16:30



20

10

28

- 1.
- 2
- 3.
- 4.

- 1.
- 2

58

010- 68949379

010- 68948899- 50512

010- 68948899- 50501

<https://fevpa.safea.gov.cn/login.php>

<https://www.safea.gov.cn>

fes@safea.gov.cn

58

100086

010- 68948899- 50614

50615

<https://www.safea.gov.cn>

1

5

50614

50615

100873

Z

Z

Z

30

30

Z

10